



250 Civic Center Drive

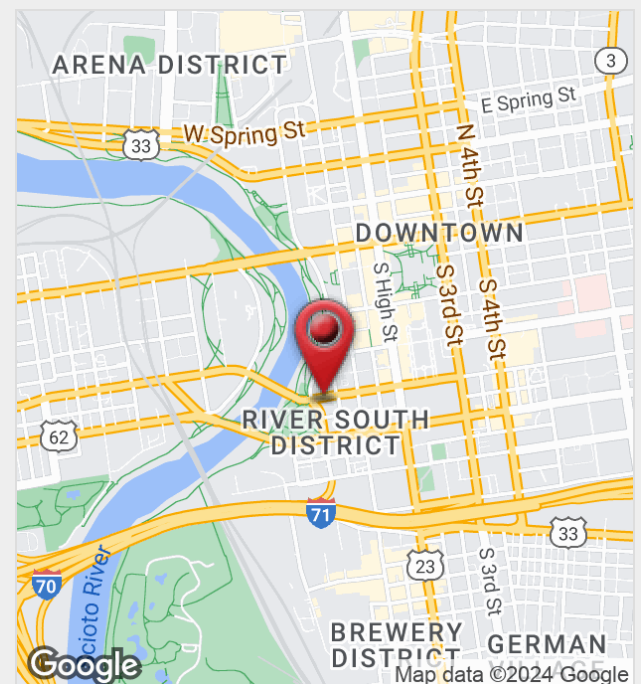
Columbus, Ohio 43215

Property Features

- Class A Office Building with Views of Scioto River
- Move-In Ready, Recently Renovated Suite
- Suite 550 | 3,033 SF Available for Sublease
- Reception/Waiting Area, 5 Private Offices, 2 Conference Rooms, Open Work Space, Break Room & Storage
- Existing Furniture is Negotiable
- Access to Building Fitness Facility
- One Garage Space (\$150/mo) & Two Surface Spaces (\$175/mo)
- Numerous Amenities Nearby
- Walkable to Bicentennial Park, Capitol Square, Franklin County Courthouse, Scioto Peninsula & the Columbus Commons
- Easy Access to SR-315, I-71, & I-70
- Sublease Expires 11/30/2028

Lease Rate: \$21.95 SF/Yr (Full Service)

www.DowntownColumbusOffice.com



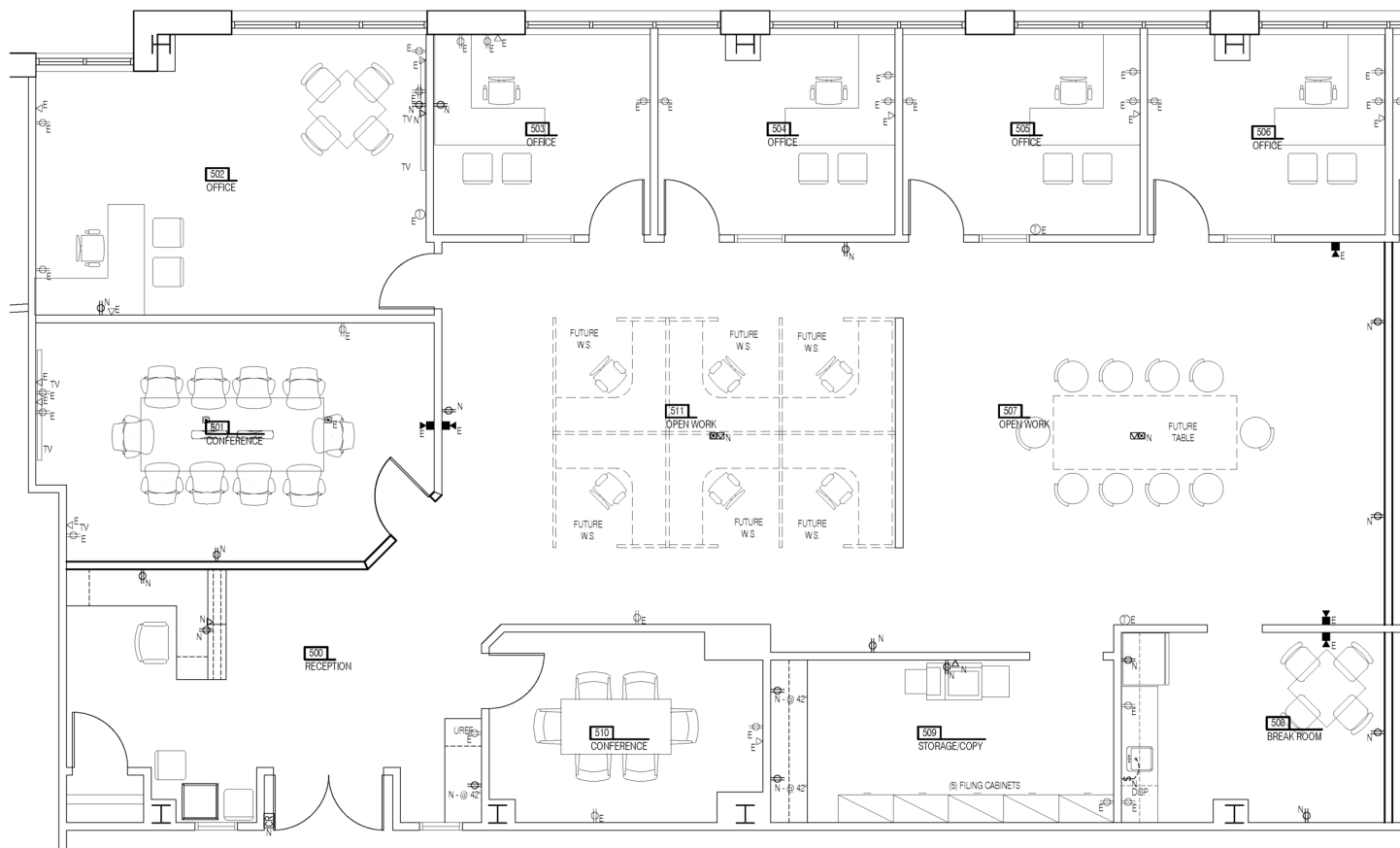
For more information:

Matt Gregory, SIOR, CCIM

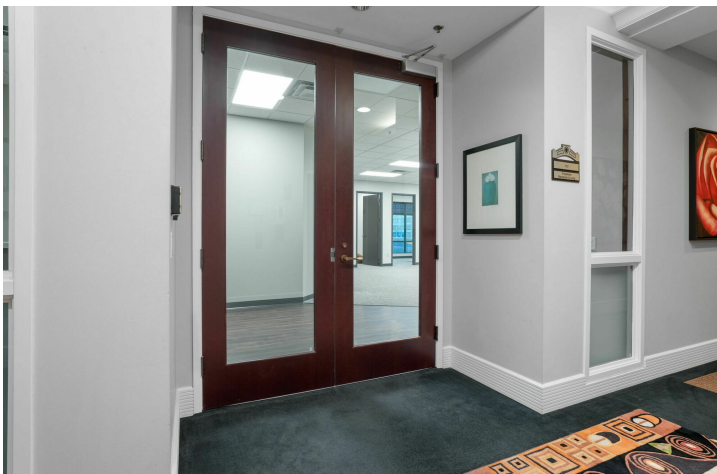
614 629 5234 • mgregory@ohioequities.com

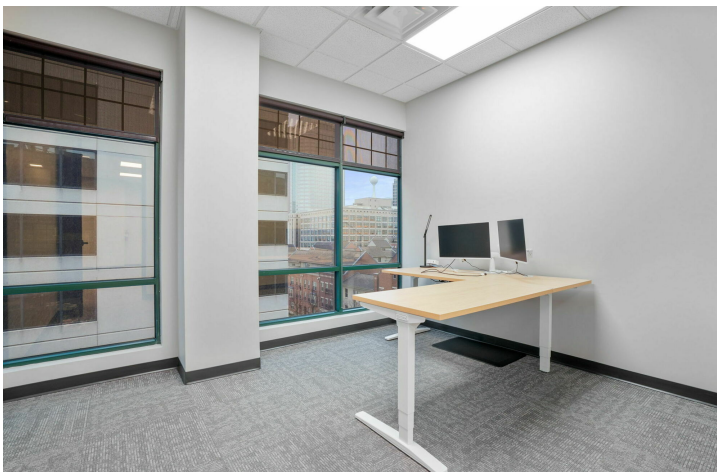
NO WARRANTY OR REPRESENTATION, EXPRESS OR IMPLIED, IS MADE AS TO THE ACCURACY OF THE INFORMATION CONTAINED HEREIN, AND THE SAME IS SUBMITTED SUBJECT TO ERRORS, OMISSIONS, CHANGE OF PRICE, RENTAL OR OTHER CONDITIONS, PRIOR SALE, LEASE OR FINANCING, OR WITHDRAWAL WITHOUT NOTICE, AND OF ANY SPECIAL LISTING CONDITIONS IMPOSED BY OUR PRINCIPALS NO WARRANTIES OR REPRESENTATIONS ARE MADE AS TO THE CONDITION OF THE PROPERTY OR ANY HAZARDS CONTAINED THEREIN ARE ANY TO BE IMPLIED.

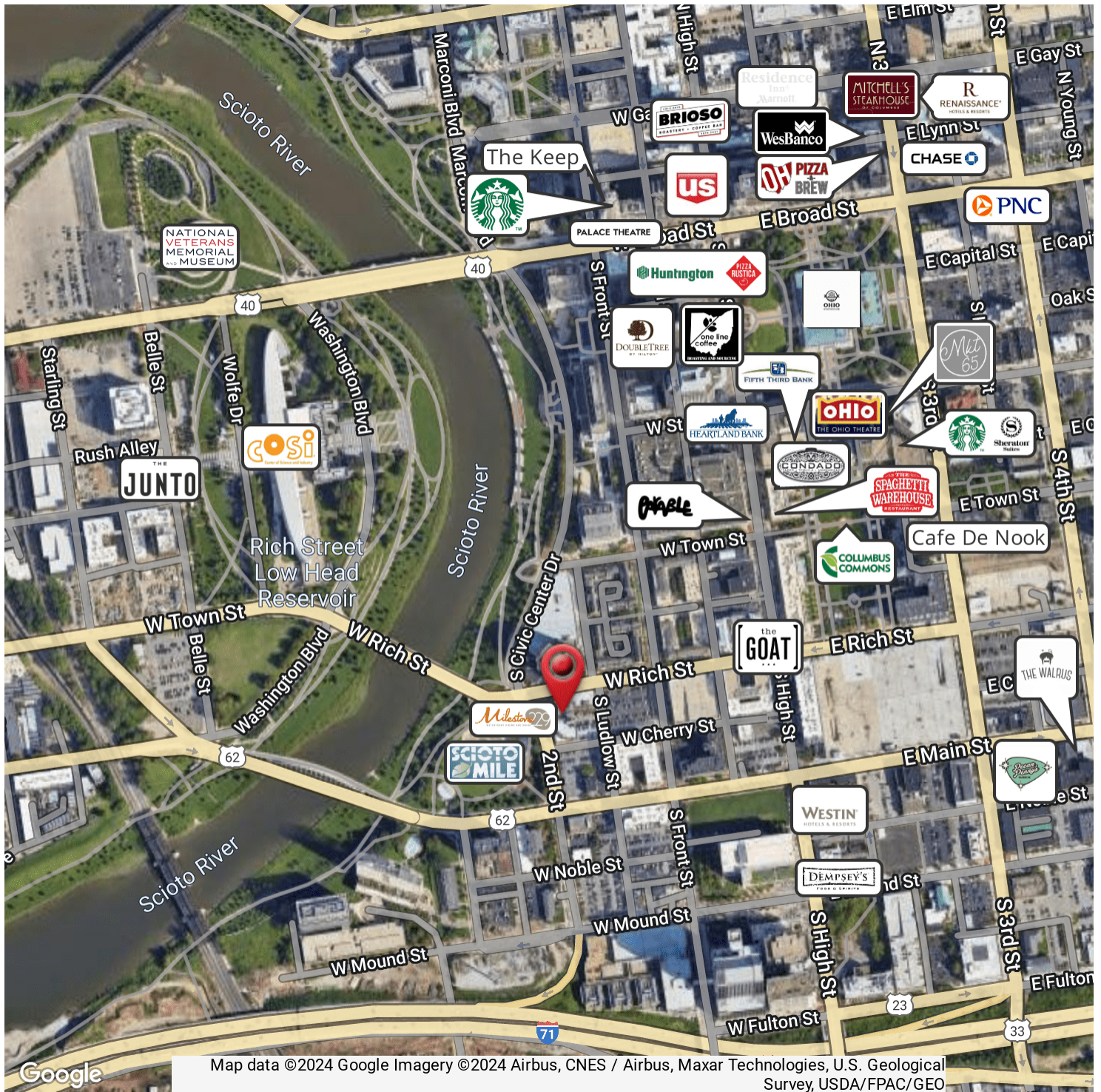
NAI Ohio Equities
605 S Front Street, Columbus, OH 43215
614 224 2400
ohioequities.com



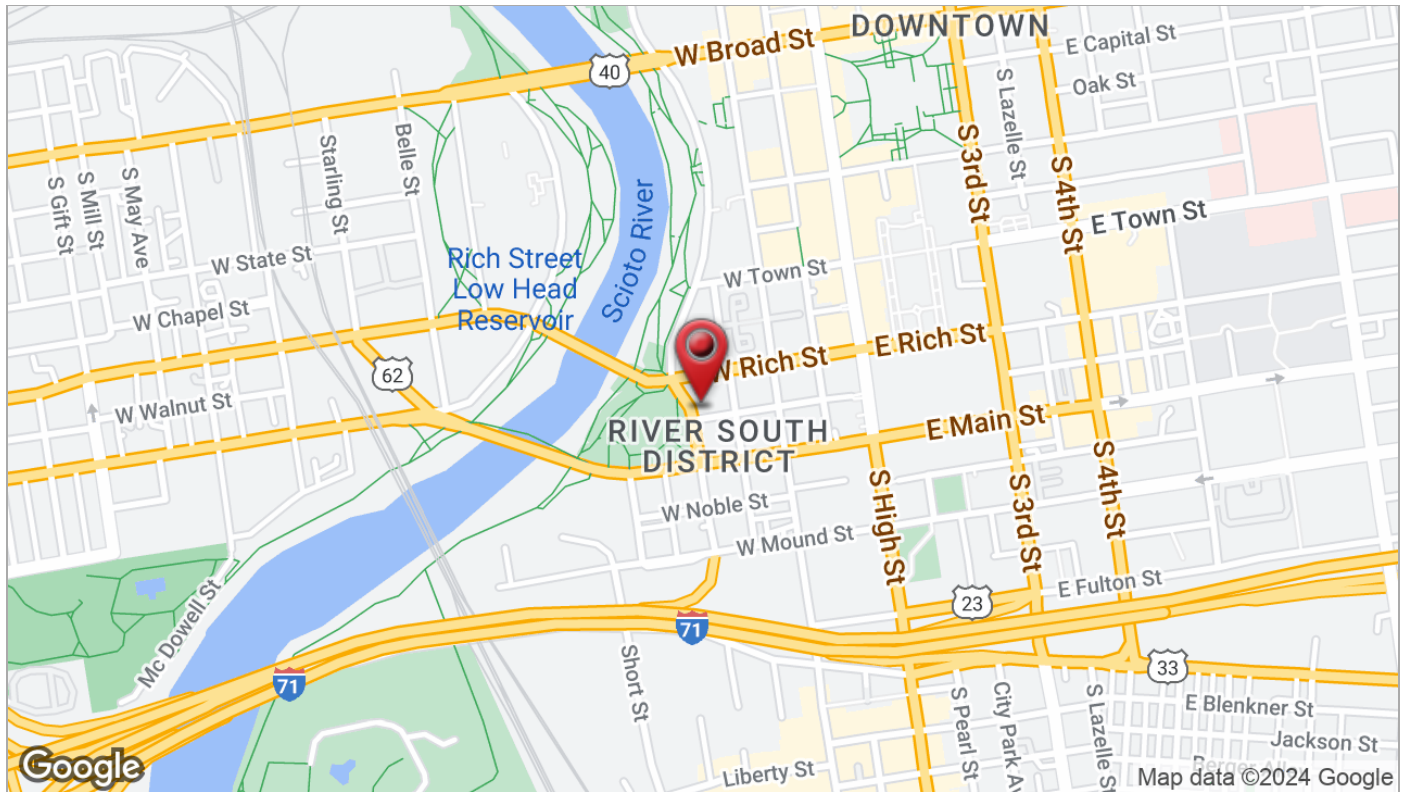
Furniture is shown for illustration purposes only. Offices have desks but not chairs, and cubicles are not present.

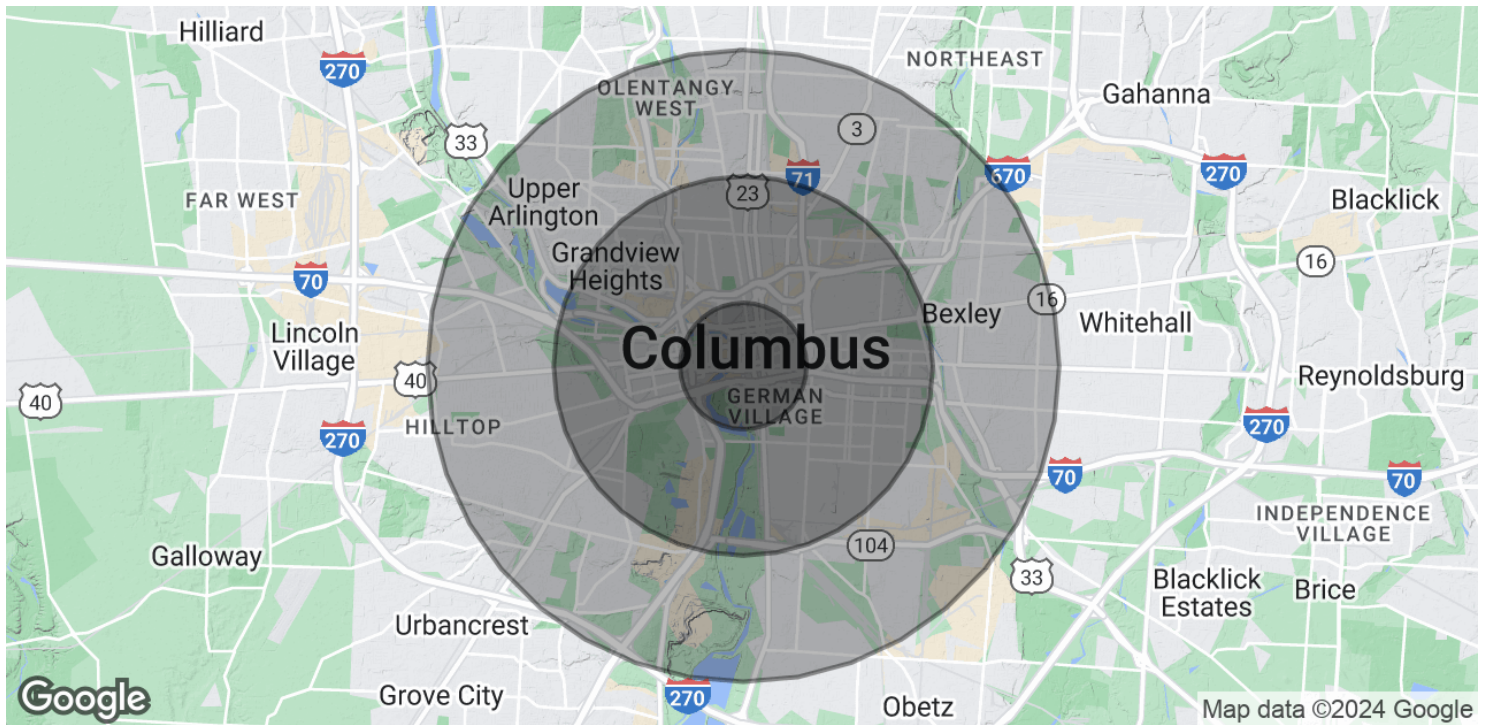






Map data ©2024 Google Imagery ©2024 Airbus, CNES / Airbus, Maxar Technologies, U.S. Geological Survey, USDA/FPAC/GEO





	1 MILE	3 MILES	5 MILES
POPULATION			
Total Population	10,962	129,121	332,377
Average Age	35.4	32.3	33.8
Average Age (Male)	35.3	32.7	33.3
Average Age (Female)	34.7	32.5	34.5
HOUSEHOLDS & INCOME			
Total Households	7,789	66,229	152,780
# of Persons per HH	1.4	1.9	2.2
Average HH Income	\$88,356	\$59,258	\$63,168
Average House Value	\$264,984	\$194,307	\$176,955

* Demographic data derived from 2020 ACS - US Census