



The Seneca

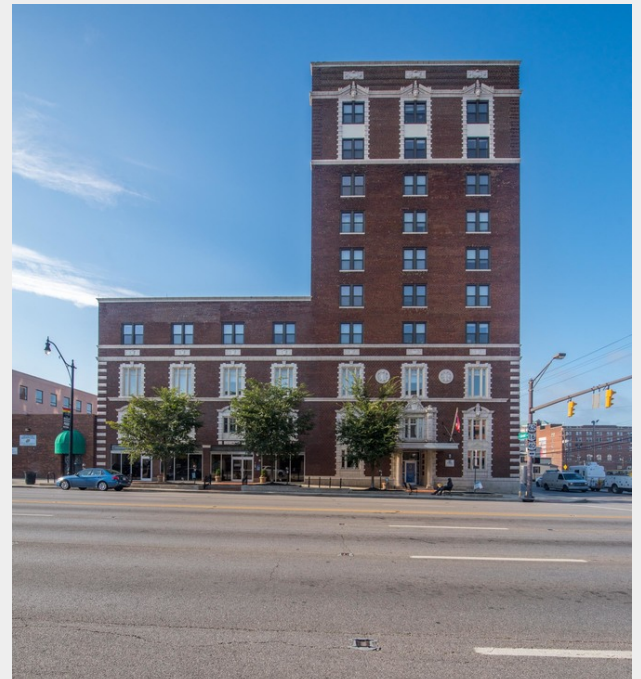
361 E Broad Street, Columbus, Ohio 43215

Property Features

- Landmark Downtown Mixed-Use Building
- Located at the Corner of Broad St & Grant Ave
- 1,800 SF Street Level Retail Space
- Perfect for Coffee/Café Location
- Bonus Mezzanine Space
- Upscale Apartments Above
- In Close Proximity to I-71 & I-670
- Located near CCAD, Franklin University, Capitol University Law School, Columbus Metropolitan Library, & Grant Medical Center

Lease Rate: \$15.00/SF (NNN)

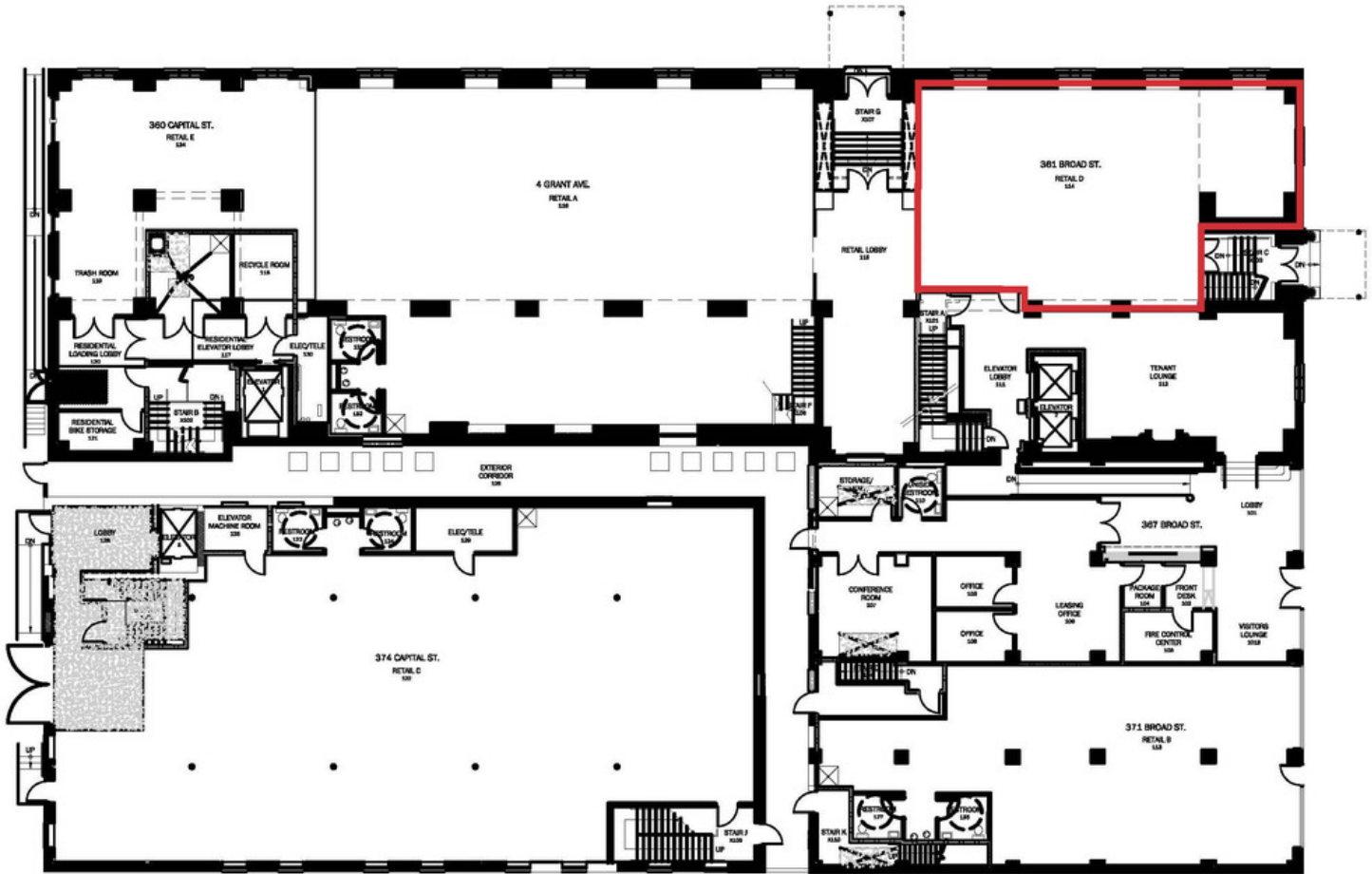
www.Seneca-Retail.com



For more information:

Matt Gregory, SIOR, CCIM

614 629 5234 • mgregory@ohioequities.com



361 E Broad Street

Property Photographs

NAI Ohio Equities



NAI Ohio Equities

Matt Gregory, SIOR, CCIM

614 629 5234

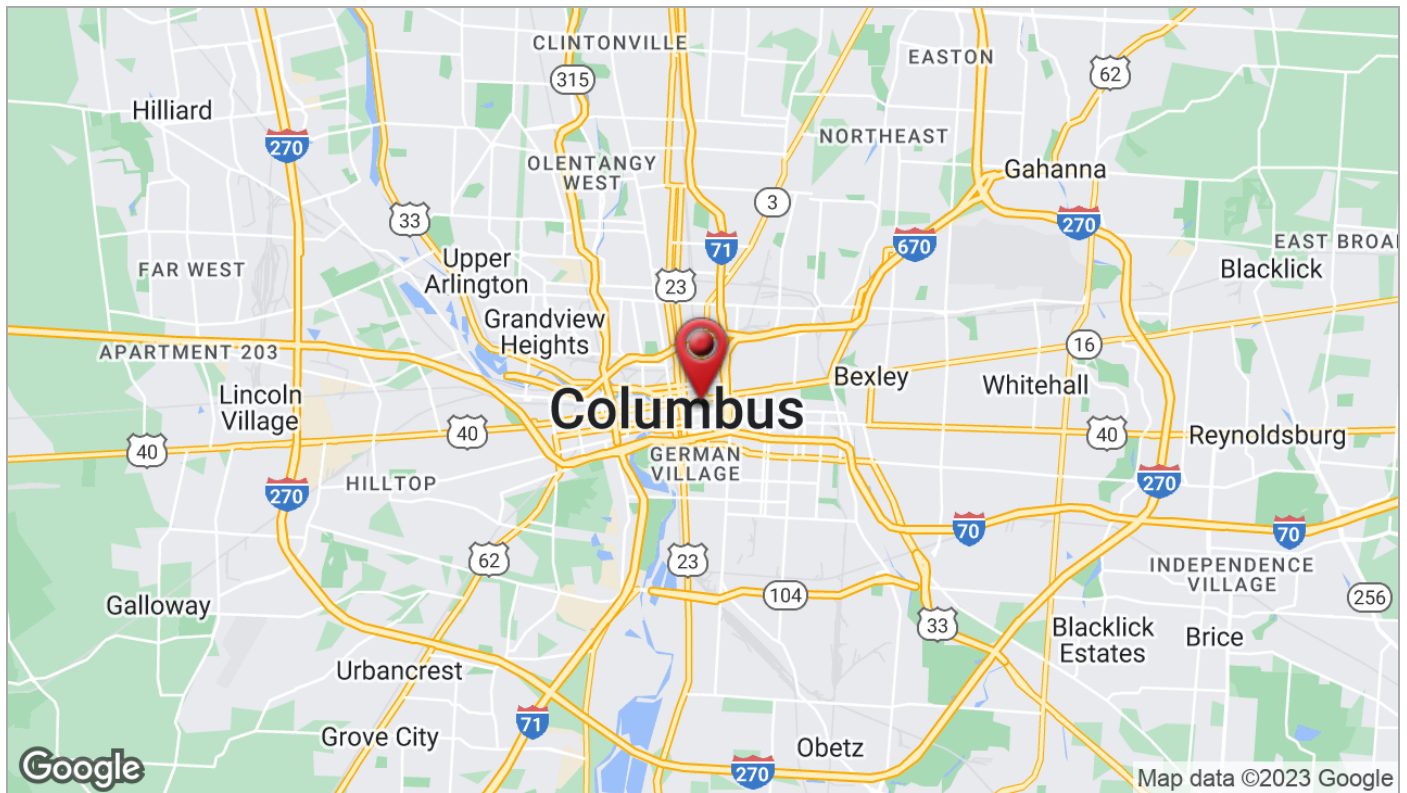
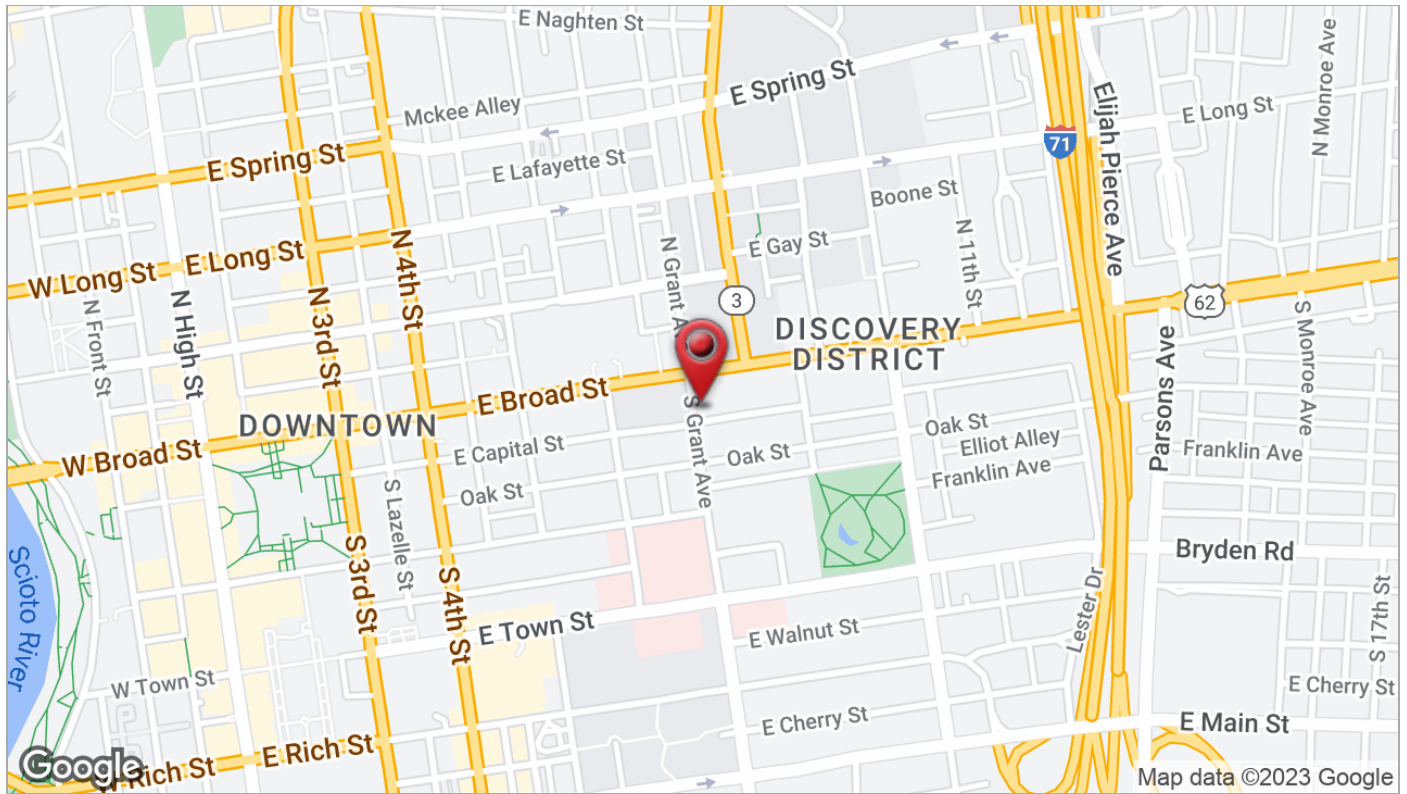
mgregory@ohioequities.com

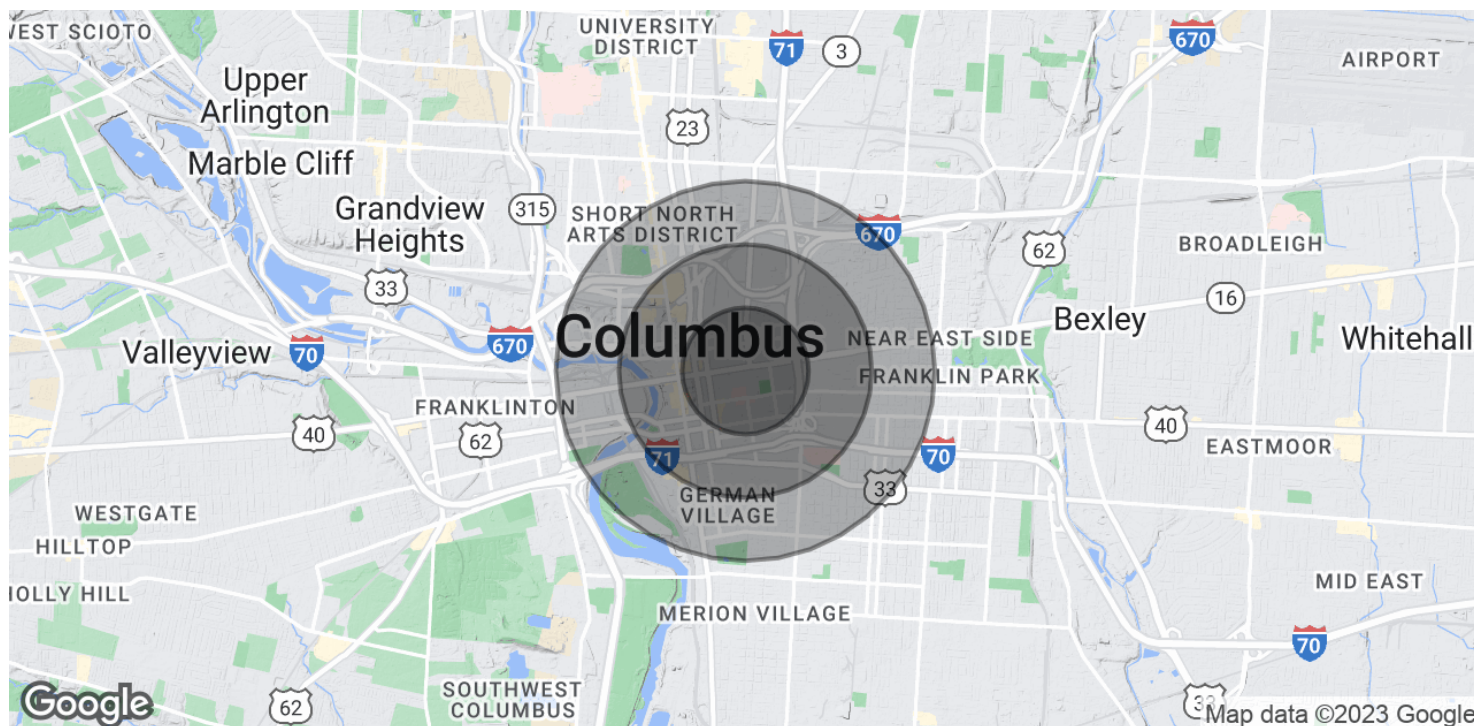
605 S Front Street, Suite 200

Columbus, OH 43215

tel: 614.224.2400 | fax: 614.224.5436

ohioequities.com





POPULATION

	0.5 MILES	1 MILE	1.5 MILES
Total Population	4,530	15,142	42,542
Average age	31.7	33.9	32.9
Average age (Male)	33.0	34.7	33.6
Average age (Female)	30.2	33.0	32.2

HOUSEHOLDS & INCOME

	0.5 MILES	1 MILE	1.5 MILES
Total households	2,917	9,211	22,100
# of persons per HH	2.5	2.8	3.1
Average HH income	\$81,899	\$87,649	\$81,885

* Demographic data derived from 2020 ACS - US Census