



250 Civic Center Drive

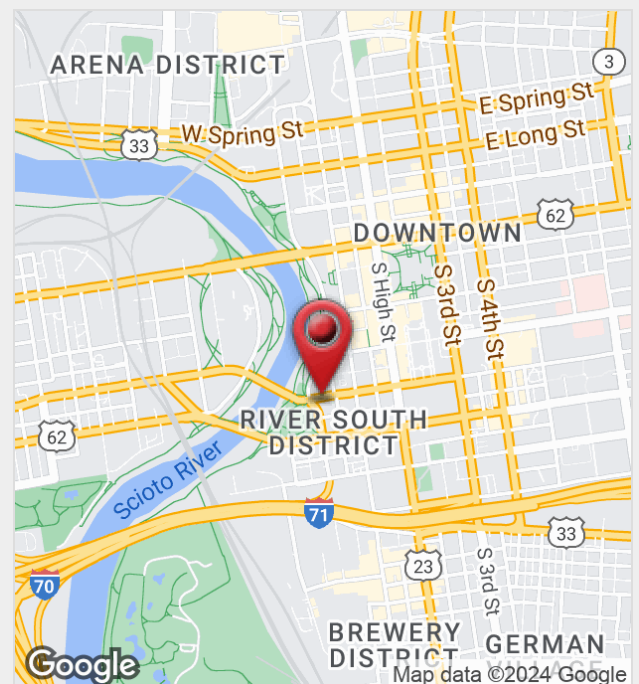
Columbus, Ohio 43215

Property Features

- Class A Office Building with Views of Scioto River
- Move-In Ready, Recently Renovated Suite
- Suite 550 | 3,033 SF Available for Sublease
- Divisible to 2,500 SF
- Reception/Waiting Area, 5 Private Offices, 2 Conference Rooms, Open Work Space, Break Room & Storage
- Existing Furniture is Negotiable
- Access to Building Fitness Facility
- One Garage Space (\$150/mo) & Two Surface Spaces (\$175/mo)
- Numerous Amenities Nearby
- Walkable to Bicentennial Park, Capitol Square, Franklin County Courthouse, Scioto Peninsula & the Columbus Commons
- Easy Access to SR-315, I-71, & I-70
- Sublease Expires 11/30/2028

Lease Rate: \$19.95 SF/Yr (Full Service)

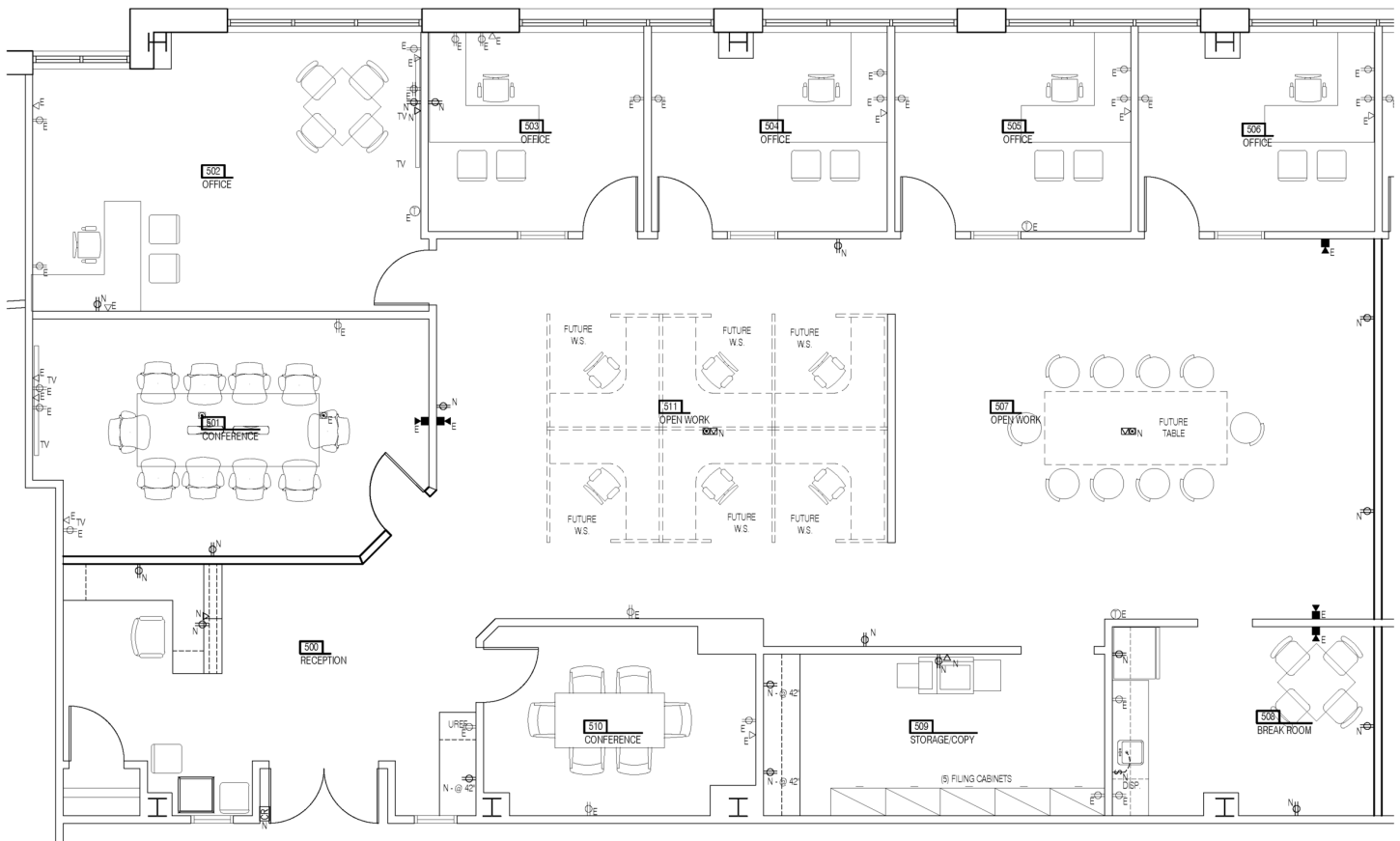
www.DowntownColumbusOffice.com



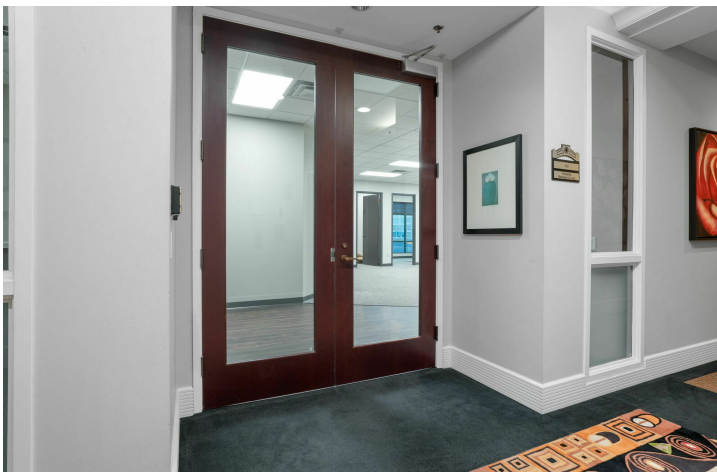
For more information:

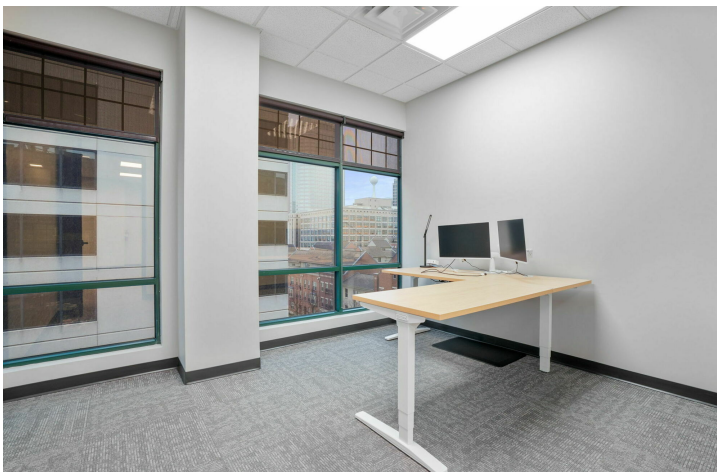
Matt Gregory, SIOR, CCIM

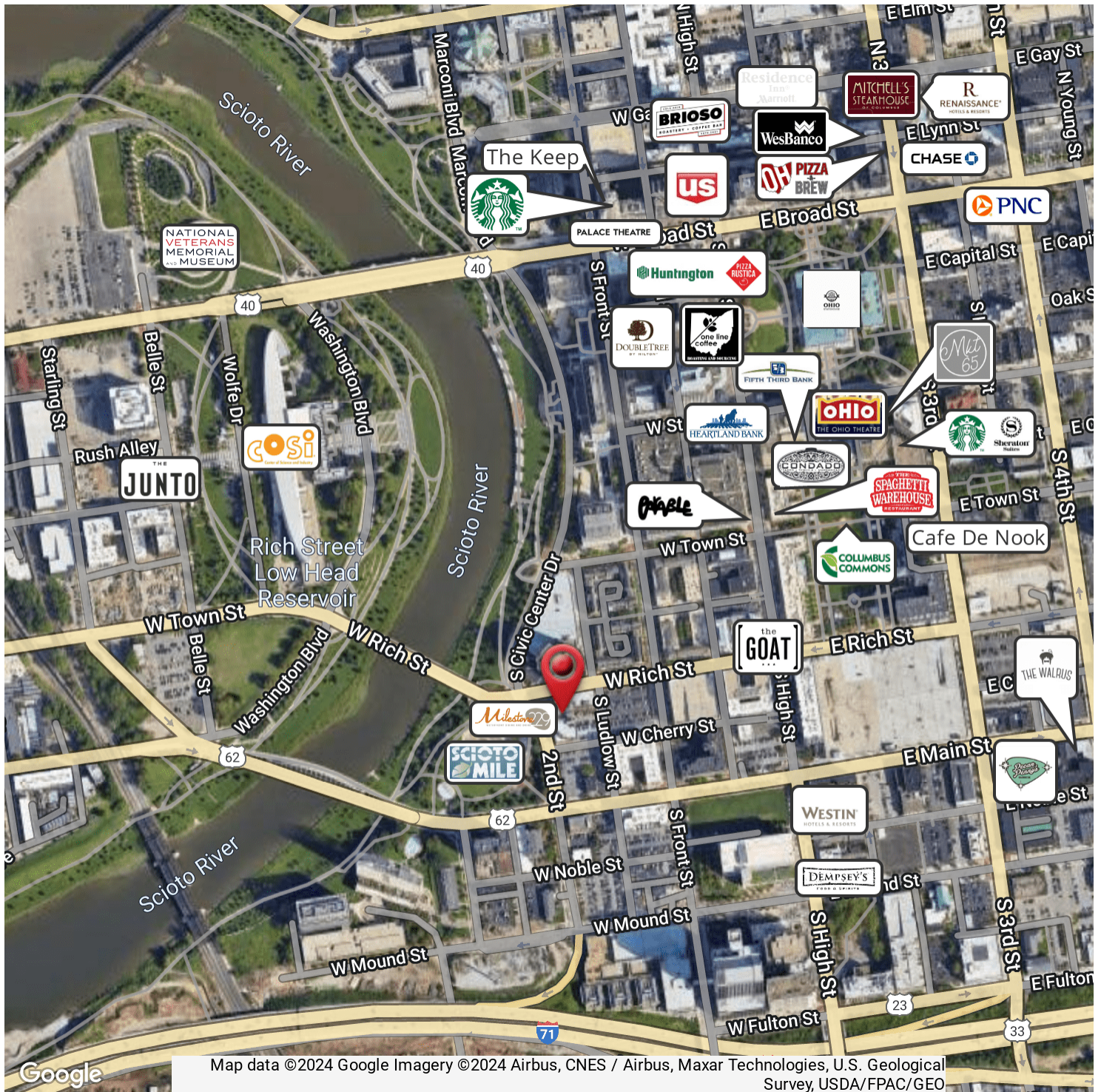
614 629 5234 • mgregory@ohioequities.com

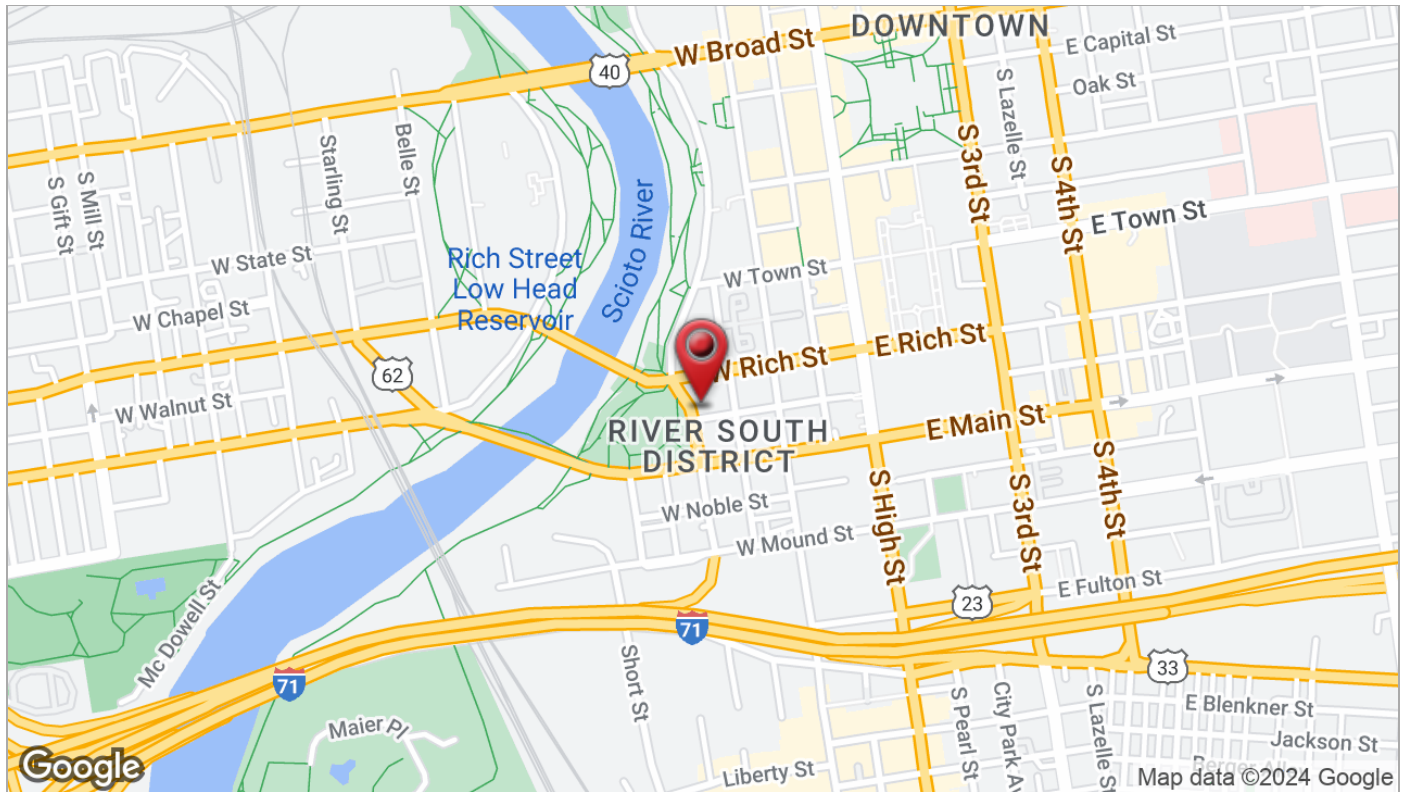


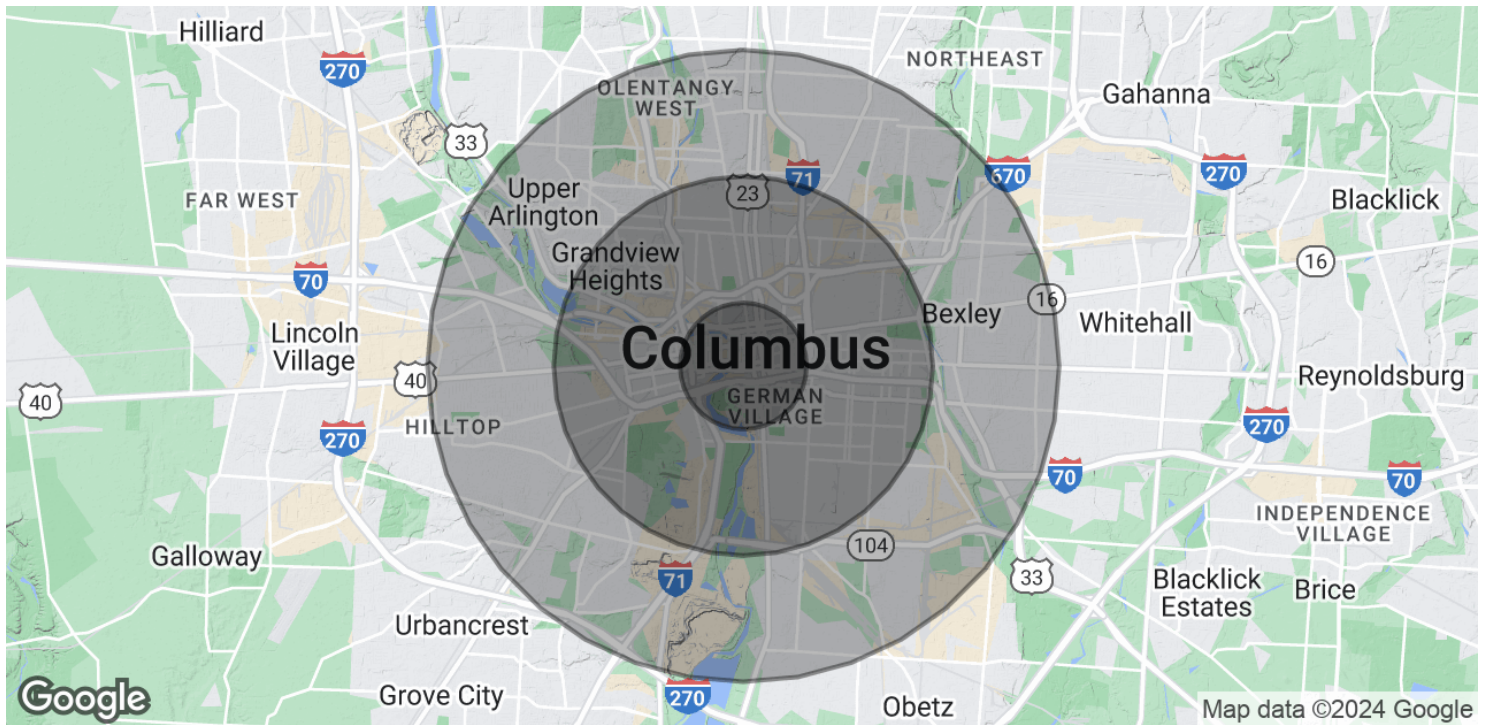
Furniture is shown for illustration purposes only. Offices have desks but not chairs, and cubicles are not present.











POPULATION

	1 MILE	3 MILES	5 MILES
Total Population	10,962	129,121	332,377
Average Age	35.4	32.3	33.8
Average Age (Male)	35.3	32.7	33.3
Average Age (Female)	34.7	32.5	34.5

HOUSEHOLDS & INCOME

	1 MILE	3 MILES	5 MILES
Total Households	7,789	66,229	152,780
# of Persons per HH	1.4	1.9	2.2
Average HH Income	\$88,356	\$59,258	\$63,168
Average House Value	\$264,984	\$194,307	\$176,955

2020 American Community Survey (ACS)